

<b>Product:</b>	600 MG Maple Whole Plant Infusion	<b>Harvest Source:</b>	Grasse River Hemp
<b>Description:</b>	Hemp derived whole plant CBD rich tincture in coconut oil with natural maple flavor.	<b>Cultivar:</b>	Youngsim 10
<b>Unit Size:</b>	30 mL	<b>Batch ID:</b>	4119510004
<b>Serving Size:</b>	1 mL	<b>Production ID:</b>	408194
<b>Product Code:</b>	W20MAF-30	<b>DOM:</b>	9-Apr-20

Quality	Method	Specification	Result	Result
<b>Total CBD:</b>	C5210-HPLCUV (Internal)	600 - 680 MG	<b>603</b>	PASS
<b>Total THC:</b>	C5210-HPLCUV (Internal)	< 0.34 %	<b>0.20</b>	PASS
<b>Appearance:</b>	ASTM E1627 - 11	Dark amber viscous liquid		PASS
<b>Odor:</b>	ASTM E1627 - 11	Floral, sweet		PASS
<b>Total Terpenes:</b>	C5933-GCMS (Internal)	Detectable	138	PASS
<b>Minor Cannabinoids:</b>	C6198 LCMSMS (Internal)	Detectable	103	PASS
Safety	Method	Specification	Result	Result
<b>Water Activity</b>	D8196-18	< 0.600	0.301	PASS
<b>Solvents:</b>	C5923-GCMS (Internal)	USP 467		PASS
<b>Pesticides:</b>	C5838 LCMSMS/AOAC 2007.01	OAR333-007-0400/EPA		PASS
<b>Mycotoxins:</b>	C5838 LCMSMS/AOAC 2007.01	MDH Exhibit 6		PASS
<b>Heavy Metals:</b>	ICPMS (External Partner)	MDH Exhibit 4		PASS

**Product of Vermont USA**



Test Method: C5210 HPLC-UV (Internal)

Test Method: C5210 HPLC-UV (Internal)

Terpene Profile	Parts Per Million	Parts Per Million	Cannabinoid Potency	MG Per Unit	MG Per Serving	
a-Pinene	<2	Isoborneol	<2	CBD	603	20.10
Camphene	<2	Menthol	<2	CBDA	<14.03	<0.47
Sabinene-	<2	endo-Borneol	<2	d9-THC	56	1.87
b-Pinene	<2	a-Terpineol	4	THCA-A	<14.03	<0.47
b-Myrcene	<2	g Terpineol	<2	d8-THC	<1.4	<0.05
a-Phellandrene	<2	Nerol	<2	CBG	16.8	0.56
Carene	<2	Pulegone	<2	CBGA	<1.4	<0.05
a-Terpinene	<2	Geraniol	<2	CBN	<1.4	<0.05
D-Limonene	<2	Geranyl acetate	<2	CBNA	<1.4	<0.05
o-Cymene	<2	a-Cedrene	<2	CBC	67.7	2.26
Eucalyptol	<2	(E)-b-Famesene	<2	CBCA	<1.4	<0.05
b-Ocimene	<2	Caryophyllene	87	CBDV	15.6	0.52
gTerpinene	<2	a-Humulene	23	CBDVA	<1.4	<0.05
Terpinolene	<2	trans-Neradiol	<2	THCV	2.64	0.09
Sabinene Hydrate	<2	cis-Neradiol	<2	THCVA	<1.4	<0.05
Fenchone	<2	Valencene	<2	CBL	<1.4	<0.05
Linalool	3	Guaiol	2			
Fenchol	5	Caryophyllene Oxide	11			
Isopulegol	<2	Cedrol	<2			
Camphor	<2	a-Bisabolol	3			

**Recommended Storage:** 20-25 ° C (68-77° F), Refrigerate for long term storage (> 3 months); avoid exposure to prolonged heat and light.

**Retest Date:** 1-Apr-22

**Product Information:** Hemp derived whole plant tinctures are intended for oral ingestion; recommended serving size is 0.5 - 1.0 mL.

**Approved By:**



**Representative:** Keith Griswold, MS

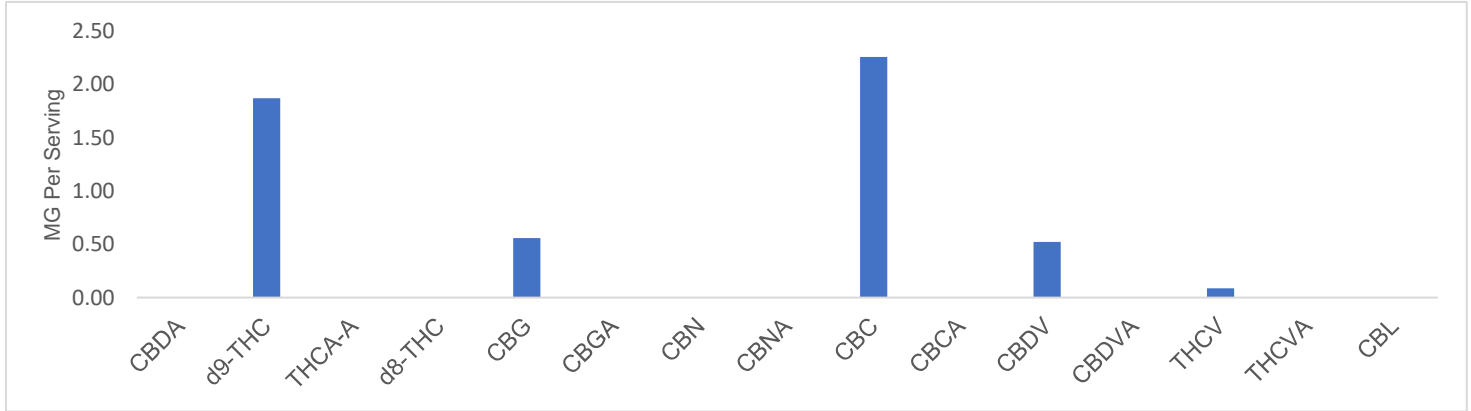
**Title:** Chief Scientific Officer

**Date:** 5-Jun-20

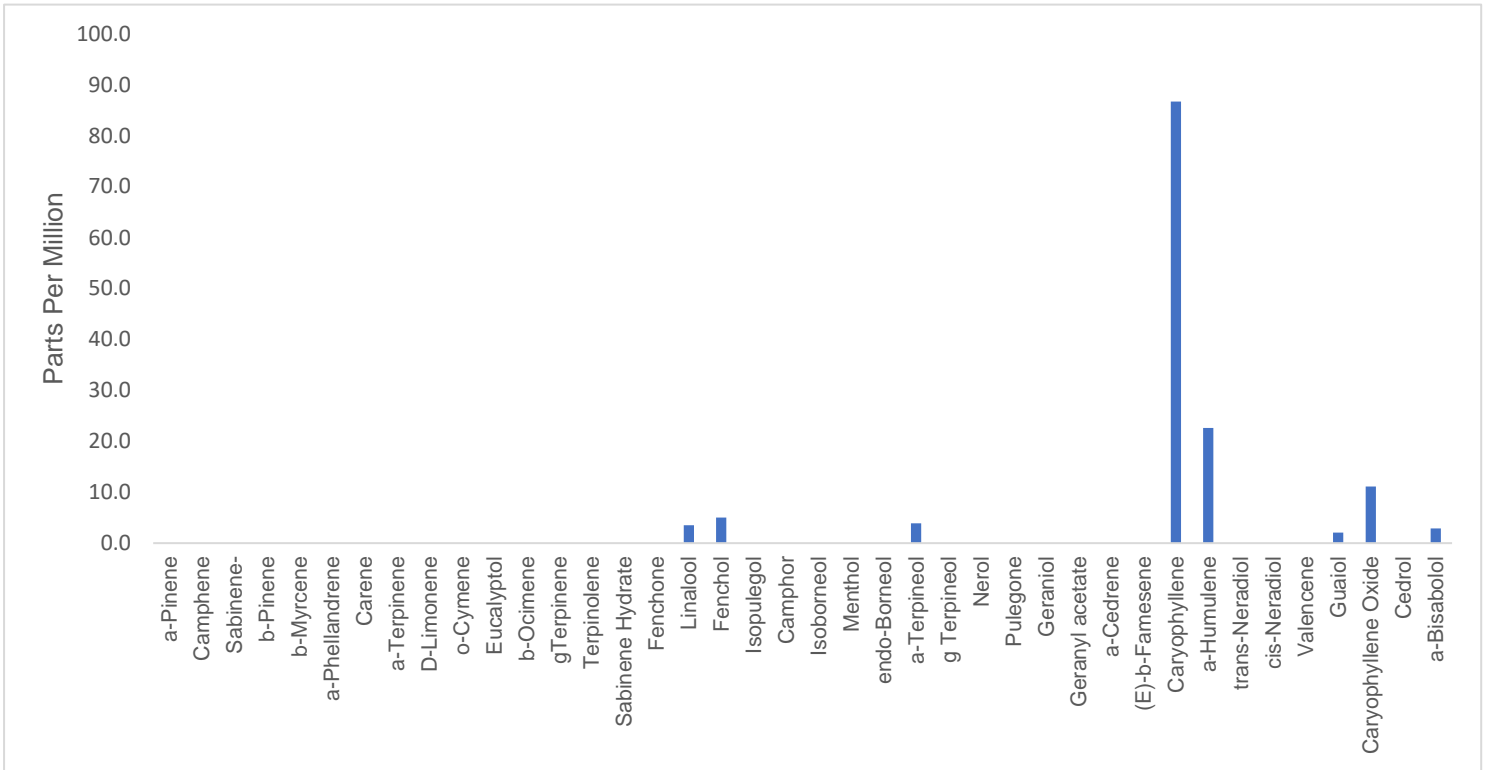


Data reported in this document pertains only to this batch and as sampled according to QMT.PLN.01.03. All rights are reserved to the producer and distributor of this product. Unauthorized reproduction of this data is prohibited. All testing is performed with internally developed test methods that have been verified or validated in accordance to AOAC and ICH guidelines. Test method performance is monitored through control charting.

**Batch ID:** 4119510004      **Parameter:** Minor Cannabinoids  
**DOM:** 9-Apr-20      **Test Method:** C6198 LCMSMS (Internal); LOQ = 0.005%



**Batch ID:** 4119510004      **Parameter:** Terpene Profile  
**DOM:** 9-Apr-20      **Test Method:** C5933 GCMS (Internal); Static Headspace; LOQ = 2 ppm



\*Terpenes represented of hemp derived before any flavouring is added.

**Approved By:**



**Representative:** Keith Griswold, MS

**Title:** Chief Scientific Officer

**Date:** 5-Jun-20



# Certificate of Analysis

## Product Specifications

**Batch ID:** 4119510004      **Parameter:** Residual Solvents  
**DOM:** 9-Apr-20      **Test Method:** C5923 GCMS (Internal); Static Headspace

Analyte	Units	Reporting Limit	Action Limit	Result*	Status
Methanol	%w/w	0.05	0.30	< 0.05	PASS
Pentane	%w/w	0.003	0.50	< 0.003	PASS
Ethanol	%w/w	0.05	0.50	<0.05	PASS
Acetone	%w/w	0.05	0.50	< 0.05	PASS
Isopropanol	%w/w	0.05	0.50	<0.05	PASS
Acetonitrile	%w/w	0.003	0.04	<0.003	PASS
n-Hexane	%w/w	0.003	0.03	<0.003	PASS
Tetrahydrofuran	%w/w	0.003	0.07	<0.003	PASS
Chloroform	%w/w	0.003	0.01	<0.003	PASS
n-Heptane	%w/w	0.02	0.50	<0.02	PASS
Toluene	%w/w	0.003	0.09	<0.003	PASS
m & p Xylene	%w/w	0.003	0.22	<0.003	PASS

\*Action limit based on USP 467 requirements for residual solvents Class I, II and III; results reported from source concentrate.

**Batch ID:** 4119510004      **Parameter:** Mycotoxins  
**DOM:** 9-Apr-20      **Test Method:** C5838 LCMSMS/AOAC 2007.01

Analytes	Units	Reporting Limit	Action Limit	Results*	Status
Mycotoxins	ppb	n/a	20	< 20	PASS

**Batch ID:** 4119510004      **Parameter:** Pesticides  
**DOM:** 9-Apr-20      **Test Method:** C5838 LCMSMS/AOAC 2007.01

Analyte	Units	Reporting Limit	Action Limit	Results*	Status
Bifenazate	ppm	0.10	0.20	<0.10	PASS
Etoxale	ppm	0.05	0.20	< 0.05	PASS
Imazalil	ppm	0.05	0.20	<0.05	PASS
Imidacloprid	ppm	0.05	0.40	<0.05	PASS
Myclobutanil	ppm	0.05	0.20	<0.05	PASS
Spiromesifen	ppm	0.05	0.20	<0.05	PASS
Trifloxystrobin	ppm	0.05	0.20	<0.05	PASS

Reporting limit for all mycotoxins screened is 2 parts per billion (ppb); Action level, maximum level allowed by EPA/Orgeon Regulations; results reported from source concentrate.

**Batch ID:** 4119510004      **Parameter:** Heavy Metals  
**DOM:** 9-Apr-20      **Test Method:** PMS (External Partner)

Analyte	Units	Reporting Limit	Action Limit	Results*	Status
As	ppb	0.1	200	18	PASS
Hg	ppb	0.1	100	7.2	PASS
Cd	ppb	0.1	200	87.0	PASS
Pb	ppb	0.1	500	34	PASS

\*Derived from whole flower prior to extraction and formulation

Approved By:



Representative: Keith Griswold, MS

Title: Chief Scientific Officer

Date: 5-Jun-20

